



VENEZUELA

PRODUCT SPECIFICATIONS

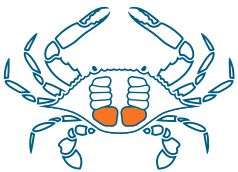


WWW.DORALFOODS.COM



FRESH JUMBO LUMP

VENEZUELA



PRODUCT DETAILS:

Our Jumbo Lump crab meat is wild-caught, packed in a state-of-the-art plant and has strictly followed the guidelines by Hazardous Analysis and Critical Control Point (**HACCP**). **High Pressure Processing (HPP)** added in the USA to remove potentially harmful microorganisms and prolong shelf life

PRODUCT DESCRIPTION:

Fresh Jumbo Lump crab meat from Blue crab (*Callinectes Sapidus*), HPP

PRODUCT SPECS:

100% net weight, packed in 1 lb tubs

PACKAGING:

20x1 lb case, (L 25.5" x W 11.62" x H 9.75"), 1.67 cu ft, **TI-HI:** 6x7

UPC CODE:

Item: Yes, Master Case: No

SHELF LIFE:

Unopened shelf life of 21 days from HPP date, with proper handling and temperature control

STORAGE:

Keep refrigerated at 33-36 degrees Fahrenheit

NUTRITION FACTS:

Serving Size 3 oz (85g) Calories 86 (Calories from Fat 0)

Amount Per Serving: *% Daily Value

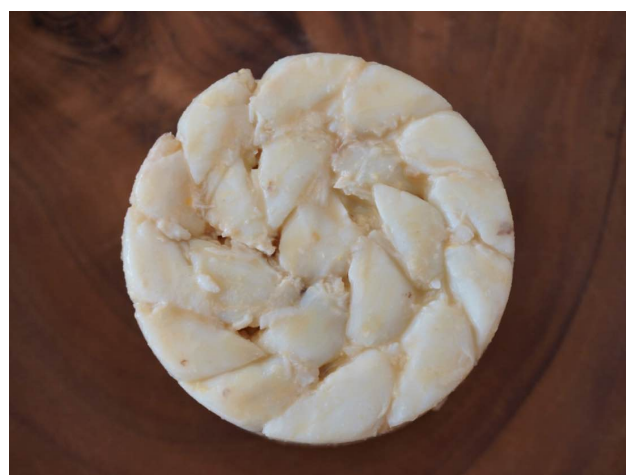
Total Fat	1g	(1.2%)
Total Sugars	0g	(0%)
Dietary Fiber	0g	(0%)
Vitamin A	0mg	(0%)
Vitamin C	0mg	(0%)
Sodium	204mg	(10%)
Total Carbohydrate	0g	(0%)
Protein	19g	
Calcium	88.4mg	(9.6%)
Iron	0.7mg	(4%)
Potassium	275mg	(6%)

*Percent Daily Values are based on a 2,000-calorie diet.

PARAMETER	TESTING PROCEDURE	REQUIREMENT
APPEARANCE	VISUAL	Large whole muscle from swimmer leg of the crab
COLOR	VISUAL	White to creamy
ODOR	SENSORY	Clean and fresh
FLAVOR	SENSORY	Naturally mild and sweet

BLUE CRAB MEAT

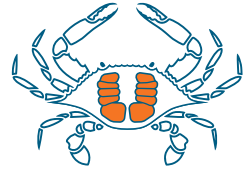
MANUFACTURER	Venezuela
LABEL	Packer
MFG PRODUCT #	
UPC CASE	
UPC PACKAGE	
DESCRIPTION	Large whole muscle from the crab's swimmer leg
SPECIES	Blue Crab (Callinectes Sapidus)
COUNTRY OF ORIGIN	Venezuela, Wild Caught
SHELF LIFE	21 days from HPP date
STORAGE	33-36 degrees Fahrenheit
PACK SIZE	20x1 lb plastic tubs
NET WEIGHT	1 lb
GROSS WEIGHT	23 lbs
CASE DIMENSIONS	L 25.5" x W 11.62" x H 9.75"
PALLET TI-HI	6x7
TOTAL CASES PER PALLET	42
CASE CUBE	1.67 cu ft





FRESH SUPER LUMP

VENEZUELA



PRODUCT DETAILS:

Our Super Lump crab meat is wild-caught, packed in a state-of-the-art plant and has strictly followed the guidelines by Hazardous Analysis and Critical Control Point (**HACCP**). High Pressure Processing (**HPP**) added in the USA to remove potentially harmful microorganisms and prolong shelf life

PRODUCT DESCRIPTION:

Fresh Super Lump crab meat from Blue crab (*Callinectes Sapidus*), HPP

PRODUCT SPECS:

100% net weight, packed in 1 lb tubs

PACKAGING:

20x1 lb case, (L 25.5" x W 11.62" x H 9.75"), 1.67 cu ft, **TI-HI**: 6x7

UPC CODE:

Item: Yes, Master Case: No

SHELF LIFE:

Unopened shelf life of 21 days from HPP date, with proper handling and temperature control

STORAGE:

Keep refrigerated at 33-36 degrees Fahrenheit

NUTRITION FACTS:

Serving Size 3 oz (85g) Calories 86 (Calories from Fat 0)

Amount Per Serving: *% Daily Value

Total Fat	1g	(1.2%)
Total Sugars	0g	(0%)
Dietary Fiber	0g	(0%)
Vitamin A	0mg	(0%)
Vitamin C	0mg	(0%)
Sodium	204mg	(10%)
Total Carbohydrate	0g	(0%)
Protein	19g	
Calcium	88.4mg	(9.6%)
Iron	0.7mg	(4%)
Potassium	275mg	(6%)

*Percent Daily Values are based on a 2,000-calorie diet.

PARAMETER	TESTING PROCEDURE	REQUIREMENT
APPEARANCE	VISUAL	Blended large Lump and large broken Jumbo meat
COLOR	VISUAL	White to creamy
ODOR	SENSORY	Clean and fresh
FLAVOR	SENSORY	Naturally mild and sweet

BLUE CRAB MEAT

MANUFACTURER	Venezuela
LABEL	Packer
MFG PRODUCT #	
UPC CASE	
UPC PACKAGE	
DESCRIPTION	Blended large Lump and large broken Jumbo crab meat
SPECIES	Blue Crab (Callinectes Sapidus)
COUNTRY OF ORIGIN	Venezuela, Wild Caught
SHELF LIFE	21 days from HPP date
STORAGE	33-36 degrees Fahrenheit
PACK SIZE	20x1 lb plastic tubs
NET WEIGHT	1 lb
GROSS WEIGHT	23 lbs
CASE DIMENSIONS	L 25.5" x W 11.62" x H 9.75"
PALLET TI-HI	6x7
TOTAL CASES PER PALLET	42
CASE CUBE	1.67 cu ft





FRESH LUMP VENEZUELA



PRODUCT DETAILS:

Our Lump crab meat is wild-caught, packed in a state-of-the-art plant and has strictly followed the guidelines by Hazardous Analysis and Critical Control Point (HACCP). High Pressure Processing (HPP) added in the USA to remove potentially harmful microorganisms and prolong shelf life

PRODUCT DESCRIPTION:

Fresh Lump crab meat from Blue crab (Callinectes Sapidus), HPP

PRODUCT SPECS:

100% net weight, packed in 1 lb tubs

PACKAGING:

20x1 lb case, (L 25.5" x W 11.62" x H 9.75"), 1.67 cu ft, **TI-HI:** 6x7

UPC CODE:

Item: Yes, Master Case: No

SHELF LIFE:

Unopened shelf life of 21 days from HPP date, with proper handling and temperature control

STORAGE:

Keep refrigerated at 33-36 degrees Fahrenheit

NUTRITION FACTS:

Serving Size 3 oz (85g) Calories 86 (Calories from Fat 0)

Amount Per Serving: *% Daily Value

Total Fat	1g	(1.2%)
Total Sugars	0g	(0%)
Dietary Fiber	0g	(0%)
Vitamin A	0mg	(0%)
Vitamin C	0mg	(0%)
Sodium	204mg	(10%)
Total Carbohydrate	0g	(0%)
Protein	19g	
Calcium	88.4mg	(9.6%)
Iron	0.7mg	(4%)
Potassium	275mg	(6%)

*Percent Daily Values are based on a 2,000-calorie diet.

PARAMETER	TESTING PROCEDURE	REQUIREMENT
APPEARANCE	VISUAL	Blended Lump and Special crab meat of same color
COLOR	VISUAL	White to creamy
ODOR	SENSORY	Clean and fresh
FLAVOR	SENSORY	Naturally mild and sweet

BLUE CRAB MEAT

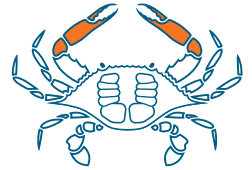
MANUFACTURER	Venezuela
LABEL	Packer
MFG PRODUCT #	
UPC CASE	
UPC PACKAGE	
DESCRIPTION	Equal blend of Lump and Special crab meat
SPECIES	Blue Crab (Callinectes Sapidus)
COUNTRY OF ORIGIN	Venezuela, Wild Caught
SHELF LIFE	21 days from HPP date
STORAGE	33-36 degrees Fahrenheit
PACK SIZE	20x1 lb plastic tubs
NET WEIGHT	1 lb
GROSS WEIGHT	23 lbs
CASE DIMENSIONS	L 25.5" x W 11.62" x H 9.75"
PALLET TI-HI	6x7
TOTAL CASES PER PALLET	42
CASE CUBE	1.67 cu ft





FRESH COCKTAIL CLAW

VENEZUELA



PRODUCT DETAILS:

Our Cocktail Claw crab meat is wild-caught, packed in a state-of-the-art plant and has strictly followed the guidelines by Hazardous Analysis and Critical Control Point (**HACCP**)

PRODUCT DESCRIPTION:

Fresh Cocktail Claw crab meat from Blue crab (*Callinectes Sapidus*)

PRODUCT SPECS:

100% net weight, packed in 12 oz tubs

PACKAGING:

20x12 oz case, (L 25.5" x W 11.62" x H 9.75"), 1.67 cu ft, **TI-HI:** 6x7

UPC CODE:

Item: Yes, Master Case: No

SHELF LIFE:

Unopened shelf life of 7 days with proper handling and temperature control

STORAGE:

Keep refrigerated at 33-36 degrees Fahrenheit

NUTRITION FACTS:

Serving Size 3 oz (85g) Calories 86 (Calories from Fat 0)

Amount Per Serving: *% Daily Value

Total Fat	1g	(1.2%)
Total Sugars	0g	(0%)
Dietary Fiber	0g	(0%)
Vitamin A	0mg	(0%)
Vitamin C	0mg	(0%)
Sodium	204mg	(10%)
Total Carbohydrate	0g	(0%)
Protein	19g	
Calcium	88.4mg	(9.6%)
Iron	0.7mg	(4%)
Potassium	275mg	(6%)

*Percent Daily Values are based on a 2,000-calorie diet.

PARAMETER	TESTING PROCEDURE	REQUIREMENT
APPEARANCE	VISUAL	Large whole muscle from swimmer leg of the crab
COLOR	VISUAL	Mix of cream, orange, brown
ODOR	SENSORY	Clean and fresh
FLAVOR	SENSORY	Naturally mild and sweet

BLUE CRAB MEAT

MANUFACTURER	Venezuela
LABEL	Packer
MFG PRODUCT #	
UPC CASE	
UPC PACKAGE	
DESCRIPTION	Large whole muscle from the crab's swimmer leg
SPECIES	Blue Crab (Callinectes Sapidus)
COUNTRY OF ORIGIN	Venezuela, Wild Caught
SHELF LIFE	7 days
STORAGE	33-36 degrees Fahrenheit
PACK SIZE	20x12 oz plastic tubs
NET WEIGHT	12 oz
GROSS WEIGHT	18 lbs
CASE DIMENSIONS	L 25.5" x W 11.62" x H 9.75"
PALLET TI-HI	6x7
TOTAL CASES PER PALLET	42
CASE CUBE	1.67 cu ft





FRESH SUPER CLAW

VENEZUELA



PRODUCT DETAILS:

Our Super Claw crab meat is wild-caught, packed in a state-of-the-art plant and has strictly followed the guidelines by Hazardous Analysis and Critical Control Point (**HACCP**). **High Pressure Processing (HPP)** added in the USA to remove potentially harmful microorganisms and prolong shelf life

PRODUCT DESCRIPTION:

Fresh Super Claw crab meat from Blue crab (*Callinectes Sapidus*), HPP

PRODUCT SPECS:

100% net weight, packed in 1 lb tubs

PACKAGING:

20x1 lb case, (L 25.5" x W 11.62" x H 9.75"), 1.67 cu ft, **TI-HI:** 6x7

UPC CODE:

Item: Yes, Master Case: No

SHELF LIFE:

Unopened shelf life of 21 days from HPP date, with proper handling and temperature control

STORAGE:

Keep refrigerated at 33-36 degrees Fahrenheit

NUTRITION FACTS:

Serving Size 3 oz (85g) Calories 86 (Calories from Fat 0)

Amount Per Serving: *% Daily Value

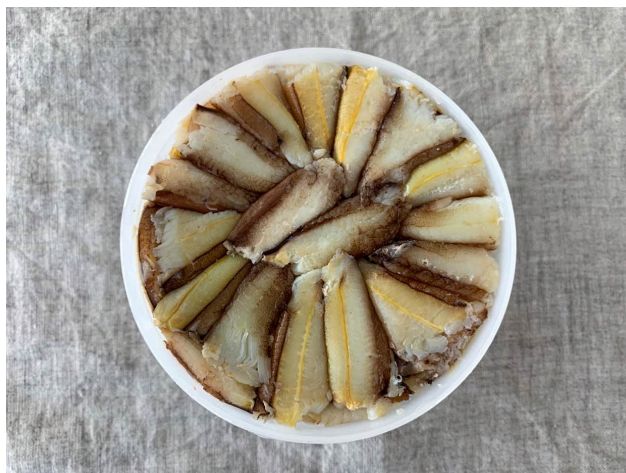
Total Fat	1g	(1.2%)
Total Sugars	0g	(0%)
Dietary Fiber	0g	(0%)
Vitamin A	0mg	(0%)
Vitamin C	0mg	(0%)
Sodium	204mg	(10%)
Total Carbohydrate	0g	(0%)
Protein	19g	
Calcium	88.4mg	(9.6%)
Iron	0.7mg	(4%)
Potassium	275mg	(6%)

*Percent Daily Values are based on a 2,000-calorie diet.

PARAMETER	TESTING PROCEDURE	REQUIREMENT
APPEARANCE	VISUAL	Large whole muscle from swimmer leg of the crab
COLOR	VISUAL	Natural light brown
ODOR	SENSORY	Clean and fresh
FLAVOR	SENSORY	Naturally mild and sweet

BLUE CRAB MEAT

MANUFACTURER	Venezuela
LABEL	Packer
MFG PRODUCT #	
UPC CASE	
UPC PACKAGE	
DESCRIPTION	Large whole muscle from the crab's swimmer leg
SPECIES	Blue Crab (Callinectes Sapidus)
COUNTRY OF ORIGIN	Venezuela, Wild Caught
SHELF LIFE	21 days from HPP date
STORAGE	33-36 degrees Fahrenheit
PACK SIZE	20x1 lb plastic tubs
NET WEIGHT	1 lb
GROSS WEIGHT	23 lbs
CASE DIMENSIONS	L 25.5" x W 11.62" x H 9.75"
PALLET TI-HI	6x7
TOTAL CASES PER PALLET	42
CASE CUBE	1.67 cu ft





FRESH CLAW VENEZUELA



PRODUCT DETAILS:

Our Claw crab meat is wild-caught, packed in a state-of-the-art plant and has strictly followed the guidelines by Hazardous Analysis and Critical Control Point (HACCP). High Pressure Processing (HPP) added in the USA to remove potentially harmful microorganisms and prolong shelf life

PRODUCT DESCRIPTION:

Fresh Claw crab meat from Blue crab (Callinectes Sapidus), HPP

PRODUCT SPECS:

100% net weight, packed in 1 lb tubs

PACKAGING:

20x1 lb case, (L 25.5" x W 11.62" x H 9.75"), 1.67 cu ft, **TI-HI:** 6x7

UPC CODE:

Item: Yes, Master Case: No

SHELF LIFE:

Unopened shelf life of 21 days from HPP date, with proper handling and temperature control

STORAGE:

Keep refrigerated at 33-36 degrees Fahrenheit

NUTRITION FACTS:

Serving Size 3 oz (85g) Calories 86 (Calories from Fat 0)

Amount Per Serving: *% Daily Value

Total Fat	1g	(1.2%)
Total Sugars	0g	(0%)
Dietary Fiber	0g	(0%)
Vitamin A	0mg	(0%)
Vitamin C	0mg	(0%)
Sodium	204mg	(10%)
Total Carbohydrate	0g	(0%)
Protein	19g	
Calcium	88.4mg	(9.6%)
Iron	0.7mg	(4%)
Potassium	275mg	(6%)

*Percent Daily Values are based on a 2,000-calorie diet.

PARAMETER	TESTING PROCEDURE	REQUIREMENT
APPEARANCE	VISUAL	Broken extracted claw meat covered with 4-8 whole merus leg pieces symmetric
COLOR	VISUAL	Natural light brown
ODOR	SENSORY	Clean and fresh
FLAVOR	SENSORY	Naturally mild and sweet

BLUE CRAB MEAT

MANUFACTURER	Venezuela
LABEL	Packer
MFG PRODUCT #	
UPC CASE	
UPC PACKAGE	
DESCRIPTION	Broken extracted claw meat covered with 4-8 whole merus leg pieces symmetric
SPECIES	Blue Crab (Callinectes Sapidus)
COUNTRY OF ORIGIN	Venezuela, Wild Caught
SHELF LIFE	21 days from HPP date
STORAGE	33-36 degrees Fahrenheit
PACK SIZE	20x1 lb plastic tubs
NET WEIGHT	1 lb
GROSS WEIGHT	23 lbs
CASE DIMENSIONS	L 25.5" x W 11.62" x H 9.75"
PALLET TI-HI	6x7
TOTAL CASES PER PALLET	42
CASE CUBE	1.67 cu ft

