



**ATLANTIC**  
**COLOMBIA**  
**PRODUCT SPECIFICATIONS**

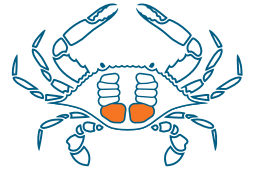


[WWW.DORALFOODS.COM](http://WWW.DORALFOODS.COM)



# FRESH JUMBO

## COLOMBIA / ATLANTIC



### PRODUCT DETAILS:

Our Jumbo crab meat is wild-caught, packed in a state-of-the-art plant and has strictly followed the guidelines by Hazardous Analysis and Critical Control Point (**HACCP**)

### PRODUCT DESCRIPTION:

Fresh Jumbo crab meat from Blue crab (*Callinectes Sapidus*)

### PRODUCT SPECS:

100% net weight, packed in 1 lb tubs

### PACKAGING:

20x1 lb case, (L 17.75" x W 11.25" x H 12.25"), 1.42 cu ft, **TI-HI:** 8x5

### UPC CODE:

Item: Yes, Master Case: No

### SHELF LIFE:

Unopened shelf life of 14 days with proper handling and temperature control

### STORAGE:

Keep refrigerated at 33-36 degrees Fahrenheit

### NUTRITION FACTS:

Serving Size 3 oz (85g) Calories 90 (Calories from Fat 0)

#### Amount Per Serving: \*% Daily Value

Total Fat	2.5g	(4%)
Total Sugars	0g	(0%)
Dietary Fiber	<1g	(2%)
Vitamin D	0.3mcg	(2%)
Vitamin C	0mg	(0%)
Sodium	320mg	(14%)
Total Carbohydrate	3g	(1%)
Protein	13g	
Calcium	80mg	(6%)
Iron	0.3mg	(2%)
Potassium	230mg	(4%)

\*Percent Daily Values are based on a 2,000-calorie diet.

PARAMETER	TESTING PROCEDURE	REQUIREMENT
APPEARANCE	VISUAL	Large whole muscle from swimmer leg of the crab
COLOR	VISUAL	White to creamy
ODOR	SENSORY	Clean and fresh
FLAVOR	SENSORY	Naturally mild and sweet

# BLUE CRAB MEAT

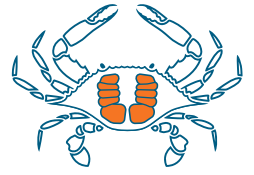
<b>MANUFACTURER</b>	Colombia
<b>LABEL</b>	Packer
<b>MFG PRODUCT #</b>	
<b>UPC CASE</b>	
<b>UPC PACKAGE</b>	
<b>DESCRIPTION</b>	Large whole muscle from the crab's swimmer leg
<b>SPECIES</b>	Blue Crab (Callinectes Sapidus)
<b>COUNTRY OF ORIGIN</b>	Colombia, Wild Caught
<b>SHELF LIFE</b>	14 days
<b>STORAGE</b>	33 - 36 degrees Fahrenheit
<b>PACK SIZE</b>	20x1 lb plastic tubs
<b>NET WEIGHT</b>	1 lb
<b>GROSS WEIGHT</b>	23 lbs
<b>CASE DIMENSIONS</b>	L 17.75" x W 11.25" x H 12.25"
<b>PALLET TI-HI</b>	8x5
<b>TOTAL CASES PER PALLET</b>	40
<b>CASE CUBE</b>	1.42 cu ft





# FRESH SUPER LUMP

## COLOMBIA / ATLANTIC



### PRODUCT DETAILS:

Our Super Lump crab meat is wild-caught, packed in a state-of-the-art plant and has strictly followed the guidelines by Hazardous Analysis and Critical Control Point (**HACCP**)

### PRODUCT DESCRIPTION:

Fresh Super Lump crab meat from Blue crab (*Callinectes Sapidus*)

### PRODUCT SPECS:

100% net weight, packed in 1 lb tubs

### PACKAGING:

20x1 lb case, (L 17.75" x W 11.25" x H 12.25"), 1.42 cu ft, **TI-HI:** 8x5

### UPC CODE:

Item: Yes, Master Case: No

### SHELF LIFE:

Unopened shelf life of 14 days with proper handling and temperature control

### STORAGE:

Keep refrigerated at 33-36 degrees Fahrenheit

### NUTRITION FACTS:

Serving Size 3 oz (85g) Calories 90 (Calories from Fat 0)

#### Amount Per Serving: \*% Daily Value

Total Fat	2.5g	(4%)
Total Sugars	0g	(0%)
Dietary Fiber	<1g	(2%)
Vitamin D	0.3mcg	(2%)
Vitamin C	0mg	(0%)
Sodium	320mg	(14%)
Total Carbohydrate	3g	(1%)
Protein	13g	
Calcium	80mg	(6%)
Iron	0.3mg	(2%)
Potassium	230mg	(4%)

\*Percent Daily Values are based on a 2,000-calorie diet.

PARAMETER	TESTING PROCEDURE	REQUIREMENT
APPEARANCE	VISUAL	Large whole muscle from swimmer leg of the crab
COLOR	VISUAL	White to creamy
ODOR	SENSORY	Clean and fresh
FLAVOR	SENSORY	Naturally mild and sweet

# BLUE CRAB MEAT

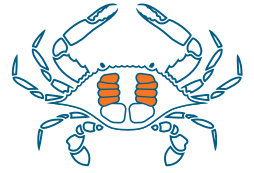
<b>MANUFACTURER</b>	Colombia
<b>LABEL</b>	Packer
<b>MFG PRODUCT #</b>	
<b>UPC CASE</b>	
<b>UPC PACKAGE</b>	
<b>DESCRIPTION</b>	Large whole muscle from the crab's swimmer leg
<b>SPECIES</b>	Blue Crab (Callinectes Sapidus)
<b>COUNTRY OF ORIGIN</b>	Colombia, Wild Caught
<b>SHELF LIFE</b>	14 days
<b>STORAGE</b>	33-36 degrees Fahrenheit
<b>PACK SIZE</b>	20x1 lb plastic tubs
<b>NET WEIGHT</b>	1 lb
<b>GROSS WEIGHT</b>	23 lbs
<b>CASE DIMENSIONS</b>	L 17.75" x W 11.25" x H 12.25"
<b>PALLET TI-HI</b>	8x5
<b>TOTAL CASES PER PALLET</b>	40
<b>CASE CUBE</b>	1.42 cu ft





# FRESH BACKFIN

## COLOMBIA / ATLANTIC



### PRODUCT DETAILS:

Our Backfin crab meat is wild-caught, packed in a state-of-the-art plant and has strictly followed the guidelines by Hazardous Analysis and Critical Control Point (**HACCP**)

### PRODUCT DESCRIPTION:

Fresh Backfin crab meat from Blue crab (*Callinectes Sapidus*)

### PRODUCT SPECS:

100% net weight, packed in 1 lb tubs

### PACKAGING:

20x1 lb case, (L 17.75" x W 11.25" x H 12.25"), 1.42 cu ft, **TI-HI:** 8x5

### UPC CODE:

Item: Yes, Master Case: No

### SHELF LIFE:

Unopened shelf life of 14 days with proper handling and temperature control

### STORAGE:

Keep refrigerated at 33-36 degrees Fahrenheit

### NUTRITION FACTS:

Serving Size 3 oz (85g) Calories 90 (Calories from Fat 0)

#### Amount Per Serving: \*% Daily Value

Total Fat	2.5g	(4%)
Total Sugars	0g	(0%)
Dietary Fiber	<1g	(2%)
Vitamin D	0.3mcg	(2%)
Vitamin C	0mg	(0%)
Sodium	320mg	(14%)
Total Carbohydrate	3g	(1%)
Protein	13g	
Calcium	80mg	(6%)
Iron	0.3mg	(2%)
Potassium	230mg	(4%)

\*Percent Daily Values are based on a 2,000-calorie diet.

PARAMETER	TESTING PROCEDURE	REQUIREMENT
APPEARANCE	VISUAL	Blended Lump and Special meat of same color
COLOR	VISUAL	White to creamy
ODOR	SENSORY	Clean and fresh
FLAVOR	SENSORY	Naturally mild and sweet

# BLUE CRAB MEAT

<b>MANUFACTURER</b>	Colombia
<b>LABEL</b>	Packer
<b>MFG PRODUCT #</b>	
<b>UPC CASE</b>	
<b>UPC PACKAGE</b>	
<b>DESCRIPTION</b>	Blended Lump and Special meat of the same color
<b>SPECIES</b>	Blue Crab (Callinectes Sapidus)
<b>COUNTRY OF ORIGIN</b>	Colombia, Wild Caught
<b>SHELF LIFE</b>	14 days
<b>STORAGE</b>	33-36 degrees Fahrenheit
<b>PACK SIZE</b>	20x1 lb plastic tubs
<b>NET WEIGHT</b>	1 lb
<b>GROSS WEIGHT</b>	23 lbs
<b>CASE DIMENSIONS</b>	L 17.75" x W 11.25" x H 12.25"
<b>PALLET TI-HI</b>	8x5
<b>TOTAL CASES PER PALLET</b>	40
<b>CASE CUBE</b>	1.42 cu ft





# FRESH COCKTAIL CLAW

COLOMBIA / ATLANTIC



### PRODUCT DETAILS:

Our Cocktail Claw crab meat is wild-caught, packed in a state-of-the-art plant and has strictly followed the guidelines by Hazardous Analysis and Critical Control Point (HACCP)

### PRODUCT DESCRIPTION:

Fresh Cocktail Claw crab meat from Blue crab (*Callinectes Sapidus*)

### PRODUCT SPECS:

100% net weight, packed in 12 oz tubs

### PACKAGING:

20x12 oz case, (L 17.75" x W 11.25" x H 12.25"), 1.42 cu ft, **TI-HI:** 8x5

### UPC CODE:

Item: Yes, Master Case: No

### SHELF LIFE:

Unopened shelf life of 14 days with proper handling and temperature control

### STORAGE:

Keep refrigerated at 33-36 degrees Fahrenheit

### NUTRITION FACTS:

Serving Size 3 oz (85g) Calories 90 (Calories from Fat 0)

#### Amount Per Serving: \*% Daily Value

Total Fat	2.5g	(4%)
Total Sugars	0g	(0%)
Dietary Fiber	<1g	(2%)
Vitamin D	0.3mcg	(2%)
Vitamin C	0mg	(0%)
Sodium	320mg	(14%)
Total Carbohydrate	3g	(1%)
Protein	13g	
Calcium	80mg	(6%)
Iron	0.3mg	(2%)
Potassium	230mg	(4%)

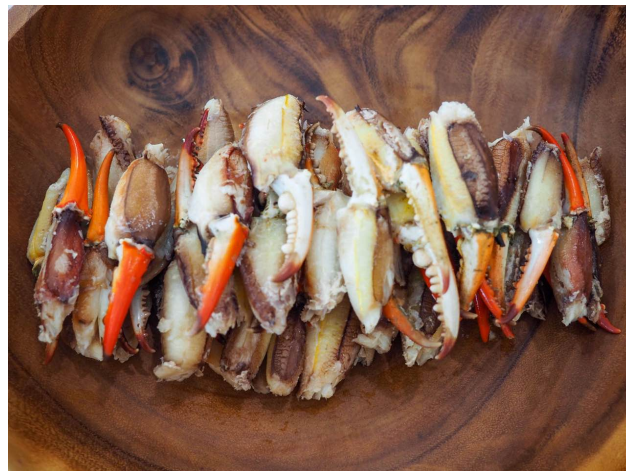
\*Percent Daily Values are based on a 2,000-calorie diet.

PARAMETER	TESTING PROCEDURE	REQUIREMENT
APPEARANCE	VISUAL	Large whole muscle from swimmer leg of the crab
COLOR	VISUAL	Mix of cream, orange, brown
ODOR	SENSORY	Clean and fresh
FLAVOR	SENSORY	Naturally mild and sweet

# BLUE CRAB MEAT



<b>MANUFACTURER</b>	Colombia
<b>LABEL</b>	Packer
<b>MFG PRODUCT #</b>	
<b>UPC CASE</b>	
<b>UPC PACKAGE</b>	
<b>DESCRIPTION</b>	Large whole muscle from the crab's swimmer leg
<b>SPECIES</b>	Blue Crab (Callinectes Sapidus)
<b>COUNTRY OF ORIGIN</b>	Colombia, Wild Caught
<b>SHELF LIFE</b>	14 days
<b>STORAGE</b>	33-36 degrees Fahrenheit
<b>PACK SIZE</b>	20x12 oz plastic tubs
<b>NET WEIGHT</b>	12 oz
<b>GROSS WEIGHT</b>	18 lbs
<b>CASE DIMENSIONS</b>	L 17.75" x W 11.25" x H 12.25"
<b>PALLET TI-HI</b>	8x5
<b>TOTAL CASES PER PALLET</b>	40
<b>CASE CUBE</b>	1.42 cu ft





# FRESH SUPER CLAW

## COLOMBIA / ATLANTIC



### PRODUCT DETAILS:

Our Super Claw crab meat is wild-caught, packed in a state-of-the-art plant and has strictly followed the guidelines by Hazardous Analysis and Critical Control Point (**HACCP**)

### PRODUCT DESCRIPTION:

Fresh Super Claw crab meat from Blue crab (*Callinectes Sapidus*)

### PRODUCT SPECS:

100% net weight, packed in 1 lb tubs

### PACKAGING:

20x1 lb case, (L 17.75" x W 11.25" x H 12.25"), 1.42 cu ft, **TI-HI**: 8x5

### UPC CODE:

Item: Yes, Master Case: No

### SHELF LIFE:

Unopened shelf life of 14 days with proper handling and temperature control

### STORAGE:

Keep refrigerated at 33-36 degrees Fahrenheit

### NUTRITION FACTS:

Serving Size 3 oz (85g) Calories 90 (Calories from Fat 0)

#### Amount Per Serving: \*% Daily Value

Total Fat	2.5g	(4%)
Total Sugars	0g	(0%)
Dietary Fiber	<1g	(2%)
Vitamin D	0.3mcg	(2%)
Vitamin C	0mg	(0%)
Sodium	320mg	(14%)
Total Carbohydrate	3g	(1%)
Protein	13g	
Calcium	80mg	(6%)
Iron	0.3mg	(2%)
Potassium	230mg	(4%)

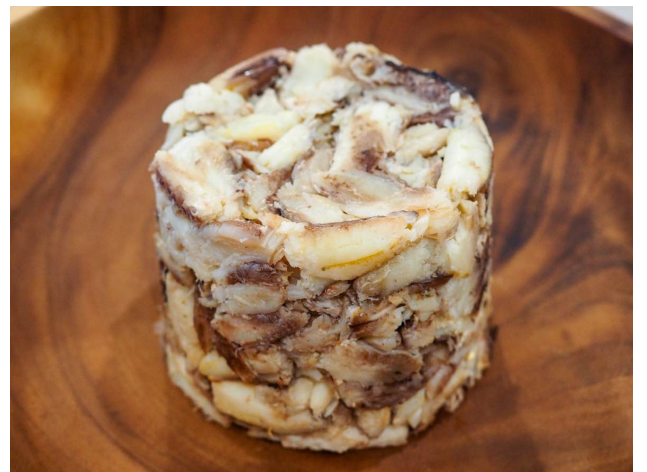
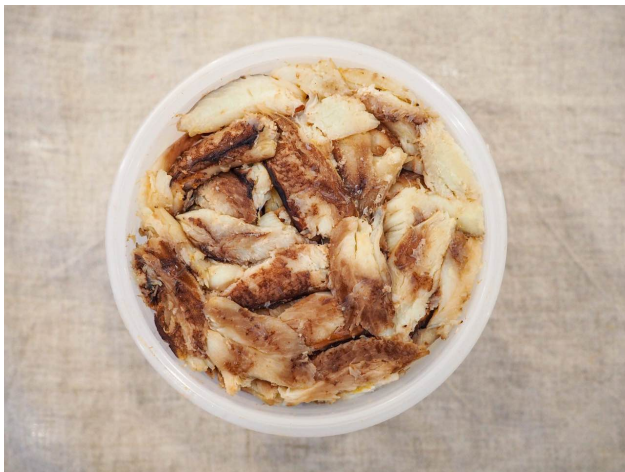
\*Percent Daily Values are based on a 2,000-calorie diet.

PARAMETER	TESTING PROCEDURE	REQUIREMENT
APPEARANCE	VISUAL	Large whole muscle from swimmer leg of the crab
COLOR	VISUAL	Natural light brown
ODOR	SENSORY	Clean and fresh
FLAVOR	SENSORY	Naturally mild and sweet

# BLUE CRAB MEAT



<b>MANUFACTURER</b>	Colombia
<b>LABEL</b>	Packer
<b>MFG PRODUCT #</b>	
<b>UPC CASE</b>	
<b>UPC PACKAGE</b>	
<b>DESCRIPTION</b>	Large whole muscle from the crab's swimmer leg
<b>SPECIES</b>	Blue Crab (Callinectes Sapidus)
<b>COUNTRY OF ORIGIN</b>	Colombia, Wild Caught
<b>SHELF LIFE</b>	14 days
<b>STORAGE</b>	33-36 degrees Fahrenheit
<b>PACK SIZE</b>	20x1 lb plastic tubs
<b>NET WEIGHT</b>	1 lb
<b>GROSS WEIGHT</b>	23 lbs
<b>CASE DIMENSIONS</b>	L 17.75" x W 11.25" x H 12.25"
<b>PALLET TI-HI</b>	8x5
<b>TOTAL CASES PER PALLET</b>	40
<b>CASE CUBE</b>	1.42 cu ft





# FRESH CLAW

## COLOMBIA / ATLANTIC



### PRODUCT DETAILS:

Our Claw crab meat is wild-caught, packed in a state-of-the-art plant and has strictly followed the guidelines by Hazardous Analysis and Critical Control Point (HACCP)

### PRODUCT DESCRIPTION:

Fresh Claw crab meat from Blue crab (Callinectes Sapidus)

### PRODUCT SPECS:

100% net weight, packed in 1 lb tubs

### PACKAGING:

20x1 lb case, (L 17.75" x W 11.25" x H 12.25"), 1.42 cu ft, **TI-HI:** 8x5

### UPC CODE:

Item: Yes, Master Case: No

### SHELF LIFE:

Unopened shelf life of 14 days with proper handling and temperature control

### STORAGE:

Keep refrigerated at 33-36 degrees Fahrenheit

### NUTRITION FACTS:

Serving Size 3 oz (85g) Calories 90 (Calories from Fat 0)

#### Amount Per Serving: \*% Daily Value

Total Fat	2.5g	(4%)
Total Sugars	0g	(0%)
Dietary Fiber	<1g	(2%)
Vitamin D	0.3mcg	(2%)
Vitamin C	0mg	(0%)
Sodium	320mg	(14%)
Total Carbohydrate	3g	(1%)
Protein	13g	
Calcium	80mg	(6%)
Iron	0.3mg	(2%)
Potassium	230mg	(4%)

\*Percent Daily Values are based on a 2,000-calorie diet.

PARAMETER	TESTING PROCEDURE	REQUIREMENT
APPEARANCE	VISUAL	Broken extracted claw meat covered with 4-8 whole merus leg pieces symmetric
COLOR	VISUAL	Natural light brown
ODOR	SENSORY	Clean and fresh
FLAVOR	SENSORY	Naturally mild and sweet

# BLUE CRAB MEAT

<b>MANUFACTURER</b>	Colombia
<b>LABEL</b>	Packer
<b>MFG PRODUCT #</b>	
<b>UPC CASE</b>	
<b>UPC PACKAGE</b>	
<b>DESCRIPTION</b>	Broken extracted claw meat covered with 4-8 whole merus leg pieces symmetric
<b>SPECIES</b>	Blue Crab (Callinectes Sapidus)
<b>COUNTRY OF ORIGIN</b>	Colombia, Wild Caught
<b>SHELF LIFE</b>	14 days
<b>STORAGE</b>	33-36 degrees Fahrenheit
<b>PACK SIZE</b>	20x1 lb plastic tubs
<b>NET WEIGHT</b>	1 lb
<b>GROSS WEIGHT</b>	23 lbs
<b>CASE DIMENSIONS</b>	L 17.75" x W 11.25" x H 12.25"
<b>PALLET TI-HI</b>	8x5
<b>TOTAL CASES PER PALLET</b>	40
<b>CASE CUBE</b>	1.42 cu ft

